



Always together, Always, success

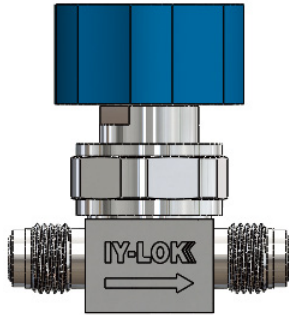
# Diaphragm Valve

UHP VALVE

ULTRA HIGH PURITY

Low Pressure - Manual Operation

## :: Diaphragm Valve Manual Operation



### Features

#### Body Material

316L Stainless Steel – Single and Double Melt.

#### Compact Design - Minimum Dead Space.

#### Maximum Flow Capacity.

#### Cleaning Process in a Certified Clean Room.

#### Diaphragm Material Elgiloy.

#### Electro Polishing Processing.

#### Seat Material PCTFE

Excellent Chemical and Thermal Resistance.

#### Long Cycle Life.

### Specifications

Size	1/4"	3/8", 1/2"
Orifice (mm)	4.5	7
Cv	0.3	0.7
Max. Working Pressure	145 psi (10 bar)	
Max. Working Temperature	14°F ~ 176°F (-10°C ~ 80°C)	

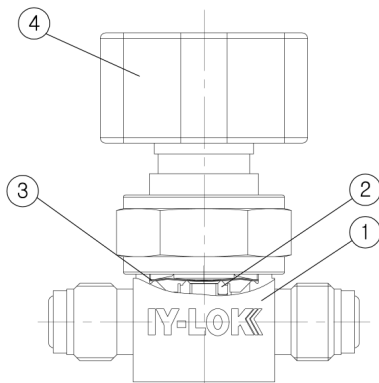
### Leak Rate

Internal Leakage (He)	$\leq 1 \cdot 10^{-9}$ atm.cc/sec
External Leakage (He)	$\leq 1 \cdot 10^{-9}$ atm.cc/sec

### Grade

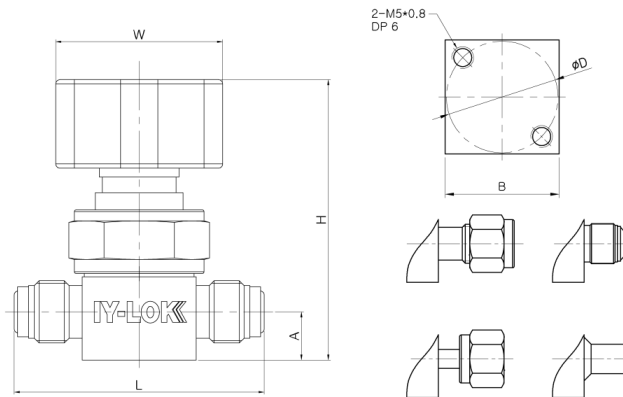
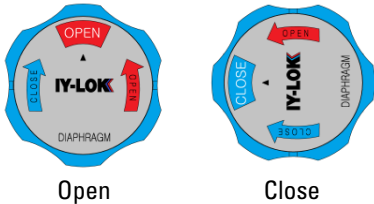
Designator	Surface Finish Level ( $\mu\text{m}$ )	
	Max	Average
BA	<1.6	<0.4
EP	<0.4	<0.125

### Materials of Constructon



NO.	PART NAME	MATERIAL
①	BODY	316L SS
②	SEAT	PCTFE / PFA / PI
③	DIAPHRAGM	Ni-CO Alloy
④	HANDLE	AL

## Manual Operation

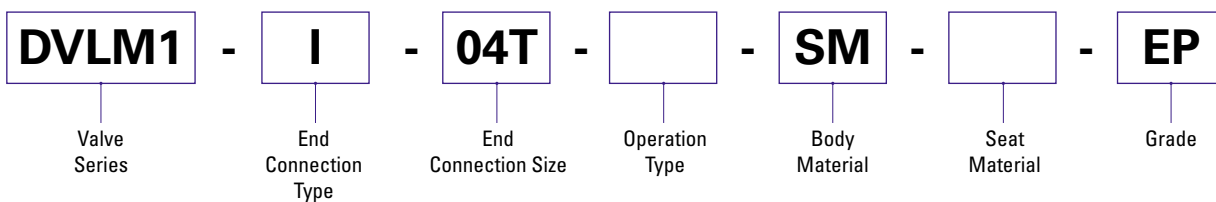


Diaphragm Valve

## Table of Dimensions

Part No.	Orifice mm	Cv	End Connection		Dimensions (mm)					
			Inlet	Outlet	L	H	A	W	B	D
DVLM1-I	4.3	0.3	1/4" IY-LOK		69.3	64.3	11	38.1	26	25.4
DVLM1-M			1/4" Male ICR		57	64.3	11	38.1	26	25.4
DVLM1-F			1/4" Female ICR		70.6	64.3	11	38.1	26	25.4
DVLM1-BW			1/4" Tube Butt Weld		54	64.3	11	38.1	26	25.4
DVLM2-I	7	0.7	3/8" IY-LOK		82.5	76.8	16	38.1	37	28
DVLM2-M			3/8" Male ICR		76.2	76.8	16	38.1	37	28
DVLM2-F			3/8" Female ICR		83	76.8	16	38.1	37	28
DVLM2-BW			3/8" Tube Butt Weld		69	76.8	16	38.1	37	28
DVLM2-I			1/2" IY-LOK		91	76.8	16	38.1	37	28
DVLM2-M			1/2" Male ICR		76.2	76.8	16	38.1	37	28
DVLM2-F			1/2" Female ICR		83	76.8	16	38.1	37	28
DVLM2-BW			1/2" Tube Butt Weld		69	76.8	16	38.1	37	28

## :: Ordering System



Valve Series		End Connection Size			Body Material		
DVLM1	Diaphragm Valve Low Pressure 1Series	Tube O.D. Designation			SM	Single Melting - 316L SS	
DVLM2	Diaphragm Valve Low Pressure 2Series	Inch Tube	Tube O.D (inch)	1/4	3/8	1/2	
		Designator		04T	06T	08T	
		ICR (Metal Face Seal) Size Designator			SS	316L SS	
		Thread Size	1/4"	3/8"	1/2"		
		Designator	04	06	08		
		Operation Type			Seat Material		
		NC	Pneumatic Actuator - Normal Close			NiI	PCTFE
		NO	Pneumatic Actuator - Normal Open			PF	PFA
					PI	PI	
					Grade		
					BA	Bright Annealing	
					EP	Electro Polished	

Always together, Always success Since 1993

\*All dimensions are in millimeter for reference only. Dimensions shown with IY-LOK nuts in finger-tight position, where applicable.